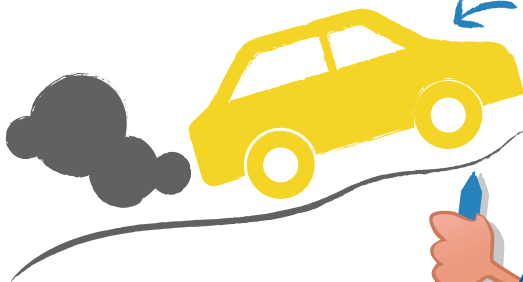


SWITCH IT OFF.



ALWAYS TURN OFF YOUR
ENGINE WHEN YOU STOP.
YOU WILL MAKE A HUGE
DIFFERENCE TO THE QUALITY
OF THE AIR THAT WE BREATHE!



^{king}
Responsible Parenting

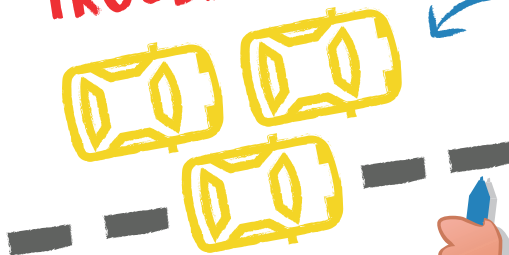


Responsible Parking Report Card: **Clean air for us, turn off your engine**

- ★ As a driver, you have a responsibility to park in a safe and considerate manner. If you don't, you could be endangering a child's life.
- ★ Perhaps you can re-think your journey to school; try walking, cycling or scooting – even if it's just one day a week, it can make a big difference!
- ★ If you need to drive your child to school, for their health and wellbeing, consider park & stride or car sharing.

Please park with care and help make the area near and around the school a safer place for pupils. Find out more at: www.responsibleparking.co.uk

**DOUBLE
TROUBLE!**



**DOUBLE PARKING MAKES
CROSSING ROADS DANGEROUS
FOR US AND OUR FAMILIES.
GIVE US AND OTHER DRIVERS
A CLEAR VIEW.**



Responsible Parenting

king



Responsible Parking Report Card: **Double parking puts children at risk**

- ★ As a driver, you have a responsibility to park in a safe and considerate manner. If you don't, you could be endangering a child's life.
- ★ Perhaps you can re-think your journey to school; try walking, cycling or scooting – even if it's just one day a week, it can make a big difference!
- ★ If you need to drive your child to school, for their health and wellbeing, consider park & stride or car sharing.

Please park with care and help make the area near and around the school a safer place for pupils. Find out more at: www.responsibleparking.co.uk

**BLUE LIGHTS,
COMING THROUGH!**



↑
**ALWAYS ENSURE THERE IS
ROOM FOR EMERGENCY SERVICES
TO PASS OR ACCESS OUR SCHOOL!**



Responsible Parenting

king



Responsible Parking Report Card: **Leave room for emergency vehicles**

- ★ As a driver, you have a responsibility to park in a safe and considerate manner. If you don't, you could be endangering a child's life.
- ★ Perhaps you can re-think your journey to school; try walking, cycling or scooting – even if it's just one day a week, it can make a big difference!
- ★ If you need to drive your child to school, for their health and wellbeing, consider park & stride or car sharing.

Please park with care and help make the area near and around the school a safer place for pupils. Find out more at: www.responsibleparking.co.uk

BE CONSIDERATE.



PLEASE LEAVE OUR
NEIGHBOURS' PATHWAYS
AND DRIVEWAYS CLEAR.



^{king}
Responsible Parenting



Responsible Parking Report Card: **Be thoughtful of our neighbours**

- ★ As a driver, you have a responsibility to park in a safe and considerate manner. If you don't, you could be endangering a child's life.
- ★ Perhaps you can re-think your journey to school; try walking, cycling or scooting – even if it's just one day a week, it can make a big difference!
- ★ If you need to drive your child to school, for their health and wellbeing, consider park & stride or car sharing.

Please park with care and help make the area near and around the school a safer place for pupils. Find out more at: www.responsibleparking.co.uk

**WE'RE SAFER
ON PAVEMENTS**



**PLEASE KEEP PAVEMENTS
CLEAR FOR US: CHILDREN,
BUGGIES, WHEELCHAIRS
AND PEDESTRIANS.**



Responsible Parenting

king



**Kent
County
Council**
kent.gov.uk



Responsible Parking Report Card: **Keep pavements free for people**

- ★ As a driver, you have a responsibility to park in a safe and considerate manner. If you don't, you could be endangering a child's life.
- ★ Perhaps you can re-think your journey to school; try walking, cycling or scooting – even if it's just one day a week, it can make a big difference!
- ★ If you need to drive your child to school, for their health and wellbeing, consider park & stride or car sharing.

Please park with care and help make the area near and around the school a safer place for pupils. Find out more at: www.responsibleparking.co.uk